

NEW RELATIONSHIP TRUST

COMMUNITY ENERGY DIESEL REDUCTION PROGRAM



NEW RELATIONSHIP TRUST
Empowering First Nations in British Columbia



**BRITISH
COLUMBIA**

cleanBC
our nature. our power. our future.





CONTENTS

Program Background	4
CEDR Program Purpose and Goals	5
Funding Streams	8
Community Energy Planning	8
Demand Side Management & Energy Efficiency	8
Renewable Energy Generation	8
Turn-key vs Community-led	10
Turn-key CEP	10
Turn-key DSM	10
Mentorship & Support	11
CEDR Funding Amounts	12
Steps of an Application Submission & Review	13
Steps After a Funding Decision	14
CEP and DSM Open Intake Model	14
Project Review Criteria	15
Project Reporting	15
Appendix A	16
Eligible Costs	17
Ineligible Costs	17

PROGRAM BACKGROUND

The Government of British Columbia's CleanBC is a pathway to a more prosperous, balanced, and sustainable future. New Relationship Trust has partnered with the Ministry of Energy and Climate Solutions as part of the Ministry's Remote Community Energy Strategy to achieve the CleanBC goal of reducing diesel electricity generation and heating in remote communities by 80% by 2030.

The Community Energy Diesel Reduction Program ("CEDR" or the "Program") is intended to support the Remote Community Energy Strategy and provides funding support for Community Energy Plans ("CEPs"), Demand Side Management ("DSM"), and Renewable Energy Generation (REG) projects in BC's remote communities.

The 2026 intake of CEDR's DSM stream now includes energy efficiency measures for community buildings as eligible activities. Further details on the DSM funding streams can be found in the "DSM Quick Guide" on the [CEDR Website](#).

CEDR PROGRAM PURPOSE AND GOALS

CEDR will support eligible Remote Communities that want to transform their diesel-based energy systems with a streamlined and flexible approach. The Program will support Remote Communities by meeting them at the project development stage they are at. The Program adopts a stage-gated approach that starts with community energy planning, followed by demand side management, and finally renewable energy generation project planning.

CEPs establish the foundation for tangible actions to implement DSM measures and de-risk renewable energy generation opportunities that promise to substantially reduce diesel consumption.

DSM measures are then prioritized over renewable energy generation, as DSM is a lower cost method of reducing diesel consumption and can have greater quality of life impacts.

PROGRAM ELIGIBILITY:

CEDR supports the following communities whose electricity grids are wholly or partially dependent on diesel for their electricity generation. Please see the table below for a list of eligible communities.

**Served by BC Hydro generating station (baseload)*

***Served by BC Hydro generating station (backup)*

****"End of Line" communities that also rely on diesel generators for backup*

NORTHERN INTERIOR

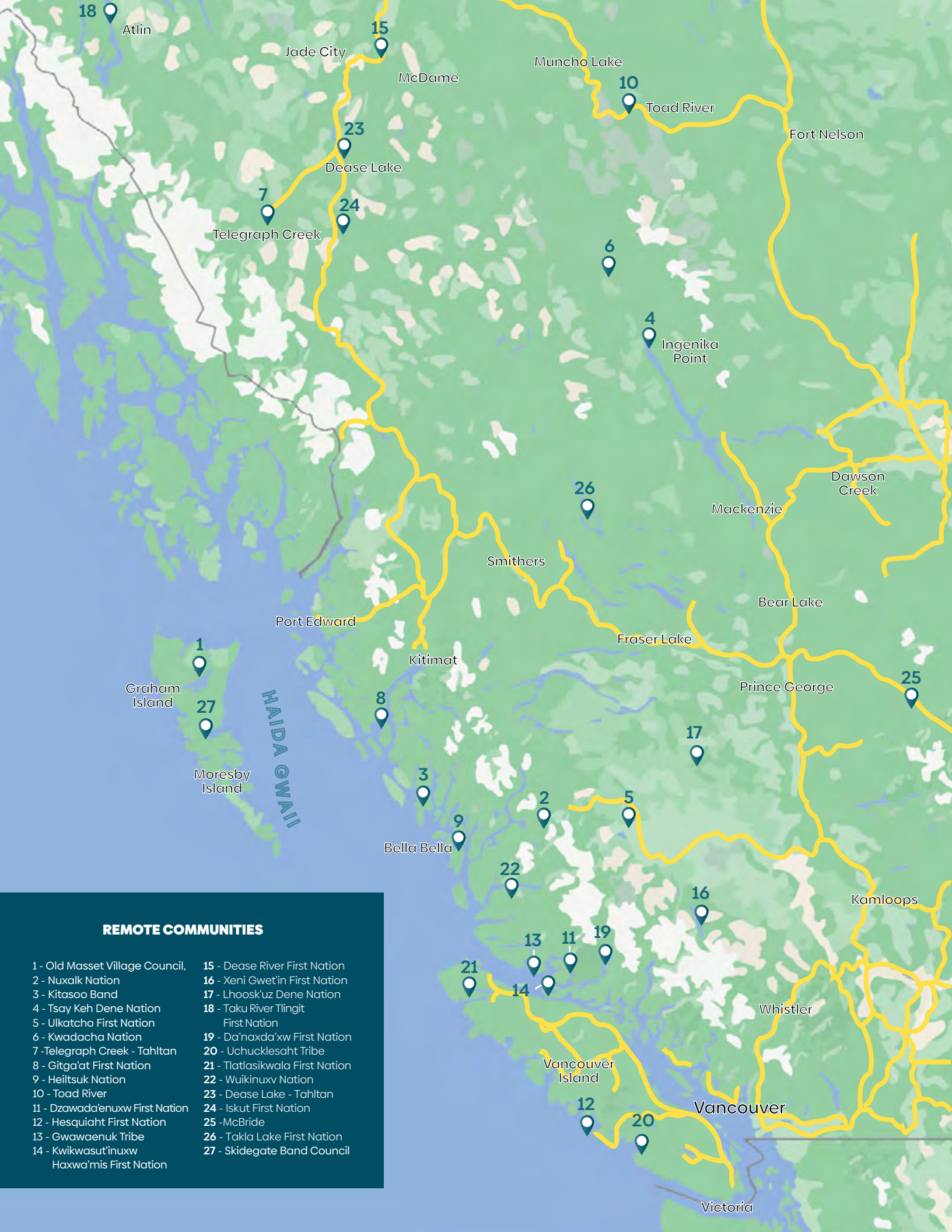
SOUTHERN INTERIOR

Indigenous Nation	Remote Community	Indigenous Nation	Remote Community
Dease River First Nation	Good Hope Lake* Dease River*	Lhoosk'uz Dene Nation	Klukus Lakes
Tahltan Nation	Dease Lake** Iskutt*** Eddontenajon *** Telegraph Creek*	Xeni Gwet'in First Nations Government	Xeni Gwet'in/ Nemiah Valley
Taku River Tlingit First Nation	Atlin*	Ulkatcho First Nation	Anahim Lake* Nimpo Lake
Tsay Lake First Nation	Tsay Keh Dene*		McBride***
Takla Lake First Nation	Takla Landing***		
Kwadacha Nation	Kwadacha/Fort Ware*		
	Jade City*		
	Toad River*		

NORTHERN COAST

SOUTHERN COAST

Indigenous Nation	Remote Community	Indigenous Nation	Remote Community
Haida Nation	Masset* Old Massett** Tlell* Port Clements* Daa-jing Giids* Sandspit* Skidegate* Skidegate Landing*	Wuikinuxv Nation	Oweekeno/Rivers Inlet
Gitga'at First Nation	Txalgiuw/Hartley Bay*	Tlatlasikwala First Nation	Bull Harbour (Hope Island)
Nuxalk Nation	Bella Coola* Hagensborg* Firvale*	Uchucklesaht Tribe Government	Elhlateese*
Kitasoo/Xai'xais Nation	Klemtu	Kwikwasut'inuxw Hax- wa'mis First Nations	Gwa'yas'dums/Health Bay (Gilford Island) Heghums/Hopetown (Watson Island)
Heiltsuk Nation	Waglisa/Bella Bella* Shearwater*	Hesquiaht First Nation	Hot Springs Cove Refuge Cove
		Ka:yu:k't'h'/Che:k'tles7et'h' First Nations	Houpsitas/Walter's Cove***
		Da'naxda'xw First Nation	Tsatsisnukwomi/ New Vancouver (Harbledown Island) Kwaatse/Knight Inlet
		Dzawada'enuxw First Nation	Ukwanalís/Kingcome Inlet



REMOTE COMMUNITIES

- 1 - Old Masset Village Council,
- 2 - Nuxalk Nation
- 3 - Kitasoo Band
- 4 - Tsay Keh Dene Nation
- 5 - Ulkatcho First Nation
- 6 - Kwadacha Nation
- 7 - Telegraph Creek - Tahltan
- 8 - Gitga'at First Nation
- 9 - Heiltsuk Nation
- 10 - Toad River
- 11 - Dzawada'enuxw First Nation
- 12 - Hesquiaht First Nation
- 13 - Gwawaenuk Tribe
- 14 - Kwikwasut'inuxw Haxwa'mis First Nation
- 15 - Dease River First Nation
- 16 - Xení Gwet'in First Nation
- 17 - Lhoosk'uz Dene Nation
- 18 - Taku River Tlingit First Nation
- 19 - Da'naxda'xw First Nation
- 20 - Uchucklesaht Tribe
- 21 - Tlatlasikwala First Nation
- 22 - Wuikinuxv Nation
- 23 - Dease Lake - Tahltan
- 24 - Iskut First Nation
- 25 - McBride
- 26 - Takla Lake First Nation
- 27 - Skidegate Band Council

FUNDING STREAMS:

Community Energy Planning & Management	Energy Efficiency & Demand Side Management Projects	Renewable Energy Generation Projects
Develop, update, & maintain CEPs	Assessments & quotes	Project conception & Pre-feasibility
	Project management & logistical planning	Feasibility
	Implementation & Installation	Pre-construction

COMMUNITY ENERGY PLANNING

The CEDR Program will work with participating Remote Communities to develop and maintain CEPs, including but not limited to establishing an energy baseline, load forecasting activities, identifying opportunities for energy efficiency and renewable energy generation, and tracking changes over time.

Remote Communities that do not currently have a CEP are recommended to have a CEP developed as the first step in the Program. Remote Communities that have CEPs that are older than 5 years or CEPs that do not meet the full criteria identified by the program can access CEDR funding to have their CEPs updated. Remote Communities that have already completed a CEP that meets all Program criteria can receive ongoing support, including regular updates to CEPs.

The CEDR Program has developed a checklist of CEP criteria for remote communities to follow to ensure that valuable and actionable reports are created. The checklist is available on the [CEDR Website](#).

DEMAND SIDE MANAGEMENT & ENERGY EFFICIENCY

Demand-Side Management represents the most cost-effective approach to the elimination of diesel generated GHGs and the amount of fuel transported to Remote Communities.

This component of the Program will support the implementation of strong DSM initiatives, focusing on deep retrofits. These deep retrofits may take place in residential or community buildings and their selection should be informed by community needs as well as a CEP. Please visit the [CEDR website](#) to view the list of incentives, their respective caps, and product requirements for both residential and community building DSM projects. Please note, residential projects have individual funding caps on eligible activities and cannot exceed these caps. Community building projects do not have funding caps on activities, but must adhere to the \$500,000 funding cap limit.

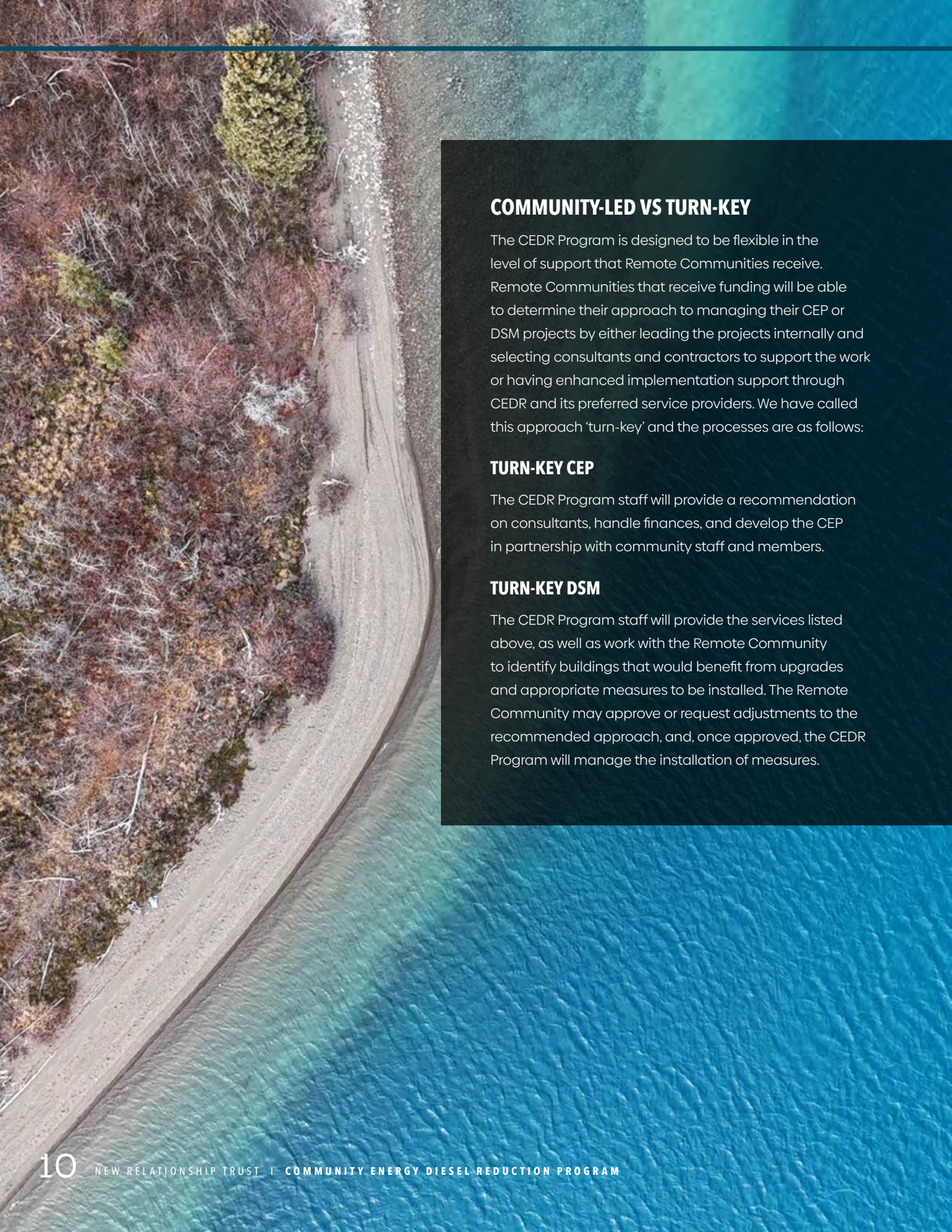
RENEWABLE ENERGY GENERATION

The renewable energy generation stream aims to achieve diesel reduction and facilitate energy sovereignty through the development of generating projects of all sizes. Remote Communities entering the Program may be at a variety of stages in the implementation of generating systems, and CEDR will provide funding at any stage of project development.

As a project progresses, additional funding for subsequent stages will be accessible through the stage-gated review process.

Please refer to Appendix A of this document for the list of eligible project technologies and costs.





COMMUNITY-LED VS TURN-KEY

The CEDR Program is designed to be flexible in the level of support that Remote Communities receive. Remote Communities that receive funding will be able to determine their approach to managing their CEP or DSM projects by either leading the projects internally and selecting consultants and contractors to support the work or having enhanced implementation support through CEDR and its preferred service providers. We have called this approach 'turn-key' and the processes are as follows:

TURN-KEY CEP

The CEDR Program staff will provide a recommendation on consultants, handle finances, and develop the CEP in partnership with community staff and members.

TURN-KEY DSM

The CEDR Program staff will provide the services listed above, as well as work with the Remote Community to identify buildings that would benefit from upgrades and appropriate measures to be installed. The Remote Community may approve or request adjustments to the recommended approach, and, once approved, the CEDR Program will manage the installation of measures.

MENTORSHIP & SUPPORT

Part of the CEDR Program staff's mandate is to provide support to communities participating in the Program. Program staff are available for questions and other support. Mentorship by the Program staff is part of the CEDR Program for each community as they advance their clean energy project forward. This can include:

- liaising with other organizations, such as contractors or other funders;
- assisting with networking to similar projects in other communities;
- reviewing funding submissions;
- providing project planning advice;
- assisting with reporting (including DSM workbooks)
- providing technical advisory services
- examples include reviewing quotes, supporting portions of a CEP, review of analyses, etc.

This program is designed for communities to succeed in their clean energy priorities and staff are available to help make community projects a reality.

The Indigenous Climate Action Network (I-CAN) administrated by the Coastal First Nations - Great Bear Initiative (CFN-GBI) is a sister program to CEDR. Climate Action Coordinators hired by I-CAN will work on projects that support community diesel reduction. Both CEDR staff and CFN-GBI staff will support the Climate Action Coordinators and other participants in the CEDR program to ensure project success. For more information about I-CAN visit their website <https://coastalfirstnations.ca/climate-action/indigenous-climate-action-network/>



CEDR FUNDING AMOUNTS

Starting this 2024 intake, the CEDR program has increased its funding caps in two areas. The previous \$2M REG funding cap per community has been increased to \$4M per community over the lifetime of the program. Additionally, the previous \$300k funding cap per fiscal year for the DSM stream has been increased to \$500k per fiscal year moving forward.

Community Energy Plans	New CEP	Up to \$95,000
	Update Existing CEP	Up to \$40,000
Demand Side Management	Refer to the DSM Incentive List or Community Building DSM for individual incentive amounts and requirements. Note: residential DSM projects have individual funding caps on eligible activities (see the DSM Incentive List). Community buildings do not have these individual funding caps on activities.	Up to \$500,000 per fiscal year.
Renewable Energy Generation (max cap of \$4M per community microgrid)	Project conception & pre-feasibility	Up to \$200,000
	Feasibility	Up to \$500,000
	Detailed design & pre-construction	Up to \$1,500,000
	Construction	Up to the funds remaining in the \$4,000,000 community funding cap

STEPS OF AN APPLICATION SUBMISSION & REVIEW

Step	Data Required	Details	Timeline
Application Support	Community priorities Project ideas	Conversations as requested with CEDR staff to prepare an application	Ongoing
Webinars	Questions regarding project eligibility and application process	A virtual webinar will be hosted that outlines the application process and reviews criteria as well as a Q&A session	June 15, 2026 July 8, 2026
Application Submission	<p>Application form</p> <ul style="list-style-type: none"> • contact information • project description • GHG reduction and/or energy efficiency targets • Turn-key vs community led • Total estimated project cost <p>Contractor/consultant quotes</p> <ul style="list-style-type: none"> • CEDR funding request • Other funding sources • Supporting documents 	Program staff are available to review applications prior to final submission	<p>All CEDR program streams are open starting June 8, 2026.</p> <p>The application deadline for the REG stream is July 20, 2026 at 4pm.</p> <p>The CEP and DSM streams will continue to accept applications until November 27, 2026.</p>
Community Support	<p>Band Council Resolution (or equivalent)</p> <p>Letter from Chief, Council, or Senior Management</p> <p>Other approved documentation</p>	A letter from an authorized signatory on an official letterhead is required to confirm community support to participate in the CEDR program. Contact Program staff on alternative support documentation.	Prior to funding being released.
Due Diligence	Program staff will work with communities should additional information not included in the original submission be required.		Summer 2026.

STEPS AFTER A FUNDING DECISION

Approved?	Details	Next Steps	Timeline
Yes	Program staff will work with the community to implement the project	Confirmation of project milestones Signing of funding agreements	Late Summer/Early Fall 2026
No	Program staff will work with the community to strengthen their application for the next intake and identify other funding opportunities	Potential updates to CEP	Late Summer/Early Fall 2026

APPLICATION LIMIT

Each Remote Community may only submit one application per stream, up to a maximum of two applications. Any additional applications will not be accepted and only the first application received per stream will be considered. Please also note that Remote Communities may only have one open project per stream. We strongly recommend completing any open CEDR projects before applying for further funding.



PROJECT REVIEW CRITERIA

The Program is governed by an Advisory Committee that is responsible for reviewing all applications, providing an assessment, and ranking according to the evaluation criteria established by the Province of BC, and providing funding recommendations to NRT.

The Advisory Committee is made up of partner organizations appointed by the Province of BC, whose members have knowledge, experience, and expertise relevant to the Program goals. Individuals from the following organizations may be included in the composition of the Advisory Committee: Ministry of Energy and Climate Solutions, Coast Funds, Coastal First Nations, New Relationship Trust, Remote Communities/ Indigenous Organizations, BC Hydro, Natural Resources Canada, Indigenous Services Canada, and the Ministry of Indigenous Relations and Reconciliation.

The funding recommendations from the Advisory Committee will include:

- Key issues and considerations;
- Conditions and estimated timeline for disbursement of funds; and
- Interim and final reporting requirements.

All eligible projects will be assessed by CEDR Program staff who will support the Advisory Committee by reviewing all application materials and presenting them to the Advisory Committee who will create an independent ranking and evaluation process.

Projects will be reviewed using the following considerations:

- Projected diesel reduction impact on community microgrid
- CEP status;
- Technical feasibility and risk mitigation;
- Projected diesel reduction impact on community microgrid;
- Social, economic and environmental benefits (beyond diesel reduction);
- Strength of project team, including community resources and consultants;
- Level of community support;
- Geographical distribution across four regions (Northern Interior, Southern Interior, North Coast and South Coast);
- Status of other CEDR funded projects in the same funding stream; and
- Total funding cap for Program participants.

PROJECT REPORTING

A Contribution Agreement must be signed by NRT and the applicant prior to disbursement of any funds. The funding agreement will address:

- Disbursement conditions and estimated timelines;
- Milestones and deliverables; and
- Reporting requirements.

The applicant will be required to submit progress reports and/or a final report that demonstrates appropriate project monitoring and evaluation, including the degree of success in achieving stated objectives.

CEDR Program staff will be responsible for monitoring compliance with the terms of the funding agreement and evaluating the outcomes of all funded projects.

APPENDIX A

Examples of Eligible Renewable Generation Project Types, Eligible and Ineligible Costs, and Activities Ineligible for Funding.

Eligible Renewable Energy Generation project types

- Micro-hydro
- Wind
- Solar photo-voltaic (not solar thermal)
- Biomass projects, (including power, heat, and combined heat and power);
- Hydrogen
- Tidal/wave
- Geothermal
- Subsystems (batteries, inverters, and micro-grid controls) that enable GHG emissions reductions through a renewable electricity generation project

- Transmission and distribution systems that enable GHG emissions reductions through a renewable electricity generation project; or
- Some combination of the above, provided the combination of technologies has been proven in a microgrid context.

Project technologies that have not yet been demonstrated in BC need to enter the CEDR Program prior to the construction stage of the Project. This includes hydrogen, geothermal, tidal, and non-commercial technologies. This will allow for sufficient evaluation of feasibility and engineering materials to allow the Program and community to make a risk-informed investment decision prior to the construction stage.



ELIGIBLE COSTS

Eligible costs are all direct costs properly and reasonably incurred and paid specifically to the project.

Eligible costs include:

- Professional and technical services (e.g. engineering)
- Contract labour and equipment for project construction, including site preparation
- Training costs directly related to the construction and/or the operations and maintenance of the project
- Overhead costs (e.g. administrative costs, office supplies, printing) below 10% of the requested funding amount
- Project Management costs below 10% of the requested funding amount
- The incremental costs of employees who are directly involved in the construction of the project
- Community engagement costs below 10% of the requested funding amount for CEP Applications
- Contingency costs below 7% of the requested funding amount
- Travel (transportation, accommodation, meals, and allowances) generally below 10% of the requested funding amount, at the discretion of CEDR Program staff
- Technology procurement; and
- Associated materials.

INELIGIBLE COSTS

- Ongoing operating costs of Indigenous organizations or local governments.
- Staff wages.
- Administration costs greater than 10% of the requested funding amount.
- Contingency costs exceeding 7% of the requested funding amount.
- Project Management costs exceeding 10% of the requested funding amount.
- Community engagement costs exceeding 10% of the requested funding amount.
- Training costs not directly relating to the project implementation and maintenance.
- Costs and expenses incurred prior to the date of the signed CEDR Contribution Agreement.
- Financing charges, real estate and legal fees, and interest payments on loans;
- Costs associated with operating expenses and regularly scheduled maintenance work.
- Leasing land, buildings, and other facilities.
- Leasing of equipment other than equipment directly related to the construction of the project.
- Costs related to furnishing and non-fixed assets which are not essential for the operation of the asset/project
- Any goods and services costs which are received through donations or in kind.
- Taxes for which the ultimate recipient is eligible for a tax rebate and all other costs eligible for rebates.
- Any financial costs or obligations incurred by First Nations with respect to any consultations with any government or corporation concerning that government or corporation's duty to consult or accommodate.
- Costs associated with meeting statutory obligations of the provincial or federal governments or other entities. This restriction is not intended to preclude the funding of negotiations or discussions between eligible First Nations and the provincial or federal governments regarding the implementation of a clean energy project.
- Any activity or expenditure for initiatives not consistent with provincial laws, permits, regulations, established policies, orders and/or approvals; and
- Expenditures incurred prior to the date the funding agreement is signed.

All project cost eligibility is at the discretion of CEDR Program. Please connect with staff if you have any questions.



NEW RELATIONSHIP TRUST
Empowering First Nations in British Columbia

MAIN OFFICE

3188 Alder Court
North Vancouver, BC
V7H 2V6

PRINCE GEORGE OFFICE

340-177 Victoria Street
Prince George, BC